

Dwarsfluit = C

# Caravan

Duke Ellington

♩ = 248

**A**

C7b9

C7b9

C7b9

C7b9

C7b9

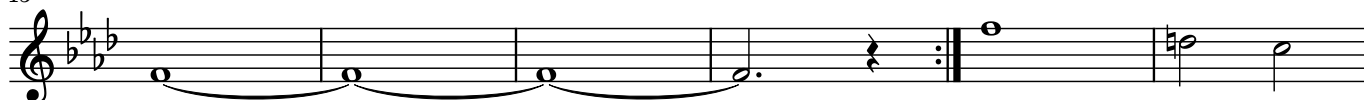
C7b9



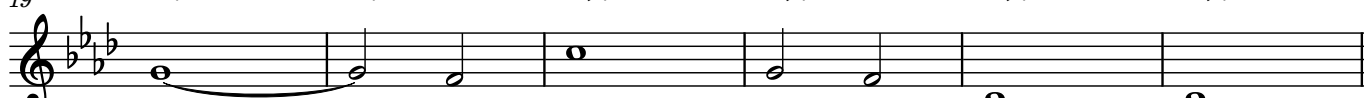
7 C7b9 C7b9 C7b9 C7b9 C7b9 C7b9



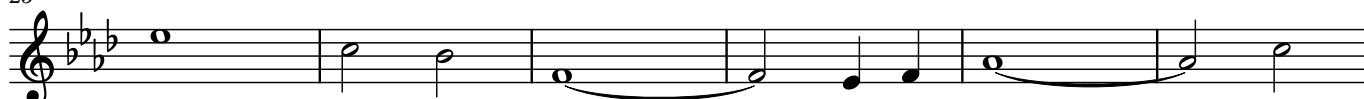
13 Fm Fm Fm Fm **B** F7 F7



19 F7 F7 Bb7 Bb7 Bb7 Bb7



25 Eb7 Eb7 Eb7 Eb7 Ab7 Ab7



31 G7+9 G7+9 **A** C7b9 C7b9 C7b9 C7b9



37 C7b9 C7b9 C7b9 C7b9 C7b9 C7b9



43 C7b9 C7b9 Fm Fm Fm Fm

